



Parish Council Updates & Colchester City Council Elections



I am pleased to confirm that Gerald Ketley has been voted in for another year as the Parish Council chairman and Sharron Law as our new vice chairman. The councillors extend their thanks to both for agreeing to these roles. Michael Clarke has stood down as the vice chairman after many years but remains on the Council and we thank him for his help and commitment over the years. In the **Colchester City Council elections**, Dr Martin Parsons received the majority vote and replaces Cllr John Jowers who has stepped down after many years' service to Colchester Council. The Parish Council would like to thank Cllr Jowers for his help and dedication to Mersea and Pyefleet Ward, which includes Fingringhoe, and send their best wishes to him. We also welcome Cllr Parsons who, along with Cllrs Robert Davidson and Carl Powling, will attend our meetings and represent Fingringhoe.

Parish Council accounts Our accounts are scrutinised annually by an independent internal auditor. Following a recent review of the records, the Internal Audit report noted that the council provided a *'very well organised presentation of the information required to undertake the internal audit. The internal controls and processes operated by the council are excellent'*. The final accounts and reports are also sent to an External Auditor, appointed by Smaller Authorities' Audit Appointments Ltd. From 3 June to 12 July 2024 any person interested has the right to inspect and make copies of the accounting records for the financial year to which the audit relates, and all books, deeds, contracts, bills, vouchers, receipts and other documents relating to those records must be made available for inspection by any person interested. Further details will be on the website and noticeboards.

Play area and recreation ground With the help of grants from Cllrs Bentley, Davidson and Powling we have received £2,050 which has gone towards maintaining the car park surface and additional play bark (at the time of writing this hasn't been completed as it has been too wet). We are also looking at repairs to the outer recreation ground fence and the play area fence in the coming weeks. The grants also helped fund the new village sign and a new school road sign.

Village sign The new sign was delivered and installed in its original position and was stolen within 48 hours, despite having extra ground fixings and a CCTV warning. At this time, there are no plans to replace the sign.

Sand works verges signs The *No Overnight Camping* signs have been installed. We hope this will prevent the overnight camping and all the unpleasant litter that goes with it. We do not want to put off visitors from visiting the area and advise that the recreation ground car park is open during the day, every day.

Village Hall New white lines have been painted to highlight the parking spaces at the village hall, which should be useful when the car park is busy. All Town and Parish Councils have been given a lovely, framed portrait of King Charles III to hang in a public space; this has been donated to the village hall and will take pride of place in the hall shortly.

Ferry Road
I am please to report that the railings have now been replaced and thank Cllr Kevin Bentley for his intervention with this.



John Brunning Walk The Council held an on-site meeting in February with a member of East Donyland Parish Council and an ECC Highways/England Coast Path in Essex officer. The meeting confirmed that the majority of the John Brunning Walk is over the East Donyland boundary (FP25) and that while ECC would permit either council to carry out work on the muddy sections of the path (with the landowner's permission) to make the path easier under foot, the cost is

very high. However, the officer requested ECC funding for this and has recently advised that ECC will likely undertake works on this footpath this summer/autumn. Before that happens ECC must obtain consent from the landowner, the Environment Agency and Natural England. The Council will keep you informed of the progress and we hope that next winter the path will be much easier to pass over.

Village pond The Council have been contacted by a PhD student requesting permission to carry out a water frog study. The report will be shared with Council who are also working with Fingringhoe Green Group to look at the pond ecology too. There are no plans to change the pond in any way, but we want to make sure the pond is in the best health it can be, to support and encourage the local wildlife.



Housing Needs Survey By the time you read this, the deadline (31 May 2024) for returning the survey will have passed, but I hope as many of you as possible completed the survey to help determine the true needs of the village. If the results show that there is a need for affordable housing, various sites in the village will be considered and the Council will work with the RCCE (Rural Community Council for Essex), a developer and a housing association, to design a development suitable for Fingringhoe.

Council meetings and information

We meet on the first Tuesday of each month (apart from August) at 7pm at the village hall. Members of the public are welcome to attend and speak during the public session. The agenda will be on the website and notice-board a few days before each meeting.

The website is regularly updated with information about the village. If you would like something added, please let the clerk know. Agendas and minutes of the meeting are also published on the website.

The website address is <https://www.fingringhoepc.org.uk/>
The email address is fingringhoeparishc@outlook.com

Petra Palfreyman, Parish Clerk

FINGRINGHOE UNITED CHARITIES TRUST

The Council have recently been approached to help the Trust, following some recent resignations of trustees. There are now some positions available as trustees, who are needed to help manage the allotments, finances and general overseeing and decision making of the Trust, and a couple of meetings per year. If you are interested in helping to keep the Trust going, please contact the Parish Clerk for more information.



In support of
St Helena

The Creation Station in support of St Helena Hospice provides innovative and award-winning art and craft classes, clubs, parties and events, for children and adults in Colchester and surrounding areas. Activities include: newborn baby keepsake classes, pre-school baby and toddler sessions, arty birthday parties, home-schooling clubs, after-school create clubs, holiday camps, family fun classes, and more. There are also exciting adult craft activities suitable for hen parties, team-building events, or simply a fun and social afternoon or evening of crafting and painting with friends. The goal is to inspire imaginations through specially designed art and craft activities and products, fostering developmental, social, and wellbeing benefits for both children and adults

All profits generated from these creative experiences are reinvested into St Helena to help local people face incurable illnesses and bereavement.

To find out more, book a group or party, or enquire about a school hosting a create club, get in touch by visiting www.thecreationstation.co.uk or contact 07748 333 019.

Samantha Ellis, St Helena Hospice



We have our very own NHW in Fingringhoe

What is NHW? It is about community and neighbours. It is not nervous curtain twitchers, it's people looking out and reporting suspicious behaviour. Members receive regular emails with safety information and crime reports from local areas.

To become a member email: fingringhoenhw@gmail.com

From Fingringhoe Historical Recorders

The Recorders are now at work on a book about our village that will be a successor to the excellent *Fingringhoe Past and Present*, published in 1998 and now out of print. It will be arranged as a series of walks, using footpaths as well as roads, noting buildings of historical interest and supplying information about the history of the village. A couple of good local photographers have agreed to take new pictures of some of the buildings, and they will be doing this during the summer. So, if you see someone taking a picture of your house, please do not be alarmed! And if you have any old photographs or historical information about your house that you would be willing to share, please email us.

The Recorders welcome new members if you think you might like to join us and need more information, please contact us via email: fingringhoerecorders@gmail.com

Then and Now – from Jacqueline Taber

When I first came to Jagers as a child, in the late 1950s, communications were very different to what they are today. Many people didn't even have a telephone at all, but we were fortunate and had a party line – so we therefore had half a landline. Unfortunately for the other person on the shared line we could listen in to their conversations, which we found fascinating, as the woman was obviously having an affair. We gleefully listened in.

At that time, if you were trying to make a call outside of the area you had to go through the exchange – to get a number in London for example. To report a fault on the line, which was frequent, you had to go down to the red telephone box (opposite the Whalebone) and then wrestle with pennies to put in the box, and press button B (when you eventually got connected) to report the fault. Now, in these days of mobiles and the internet, life is a whole lot easier (up to a point). I have a poor signal at Jagers and sometimes have to stand outside in the wind and rain to get a signal; this can be trying, but at least I don't have to go nearly a mile to report the fault.

Please use the bus!

The bus timetable that has been operating for a year now, with a 174 or 175 every hour during the day, makes it much easier to visit Colchester by public transport, instead of using a car that has to be parked in increasingly full and expensive car parks.

The more we use this service,
the more likely it is to be maintained –

So please
get on the bus!



MOVING IMAGE

Wivenhoe's volunteer-run community cinema

Just across the river, Moving Image shows high-quality contemporary films from English-speaking and other countries, as soon as possible after their release on DVD.

Films start at 7.30pm in the William Loveless Hall, Wivenhoe. Buy your tickets on the door (card only): members £5, non-members £7, students/young people FREE!

- | | |
|---------|---|
| 4 June | Zone of Interest
(2023 dir. Jonathan Glazer, UK, 12A) |
| 18 June | Perfect Days
(2023, dir. Wim Wenders, Japan, PG) |
| 2 July | Wicked Little Letters
(2023, dir. Thea Sharrock, UK, 15) |
| 16 July | Seaside Special
(2022, dir. Jens Meurer, Germany 12A) |

A Farmworker in Fingringhoe in 1944



In late spring we went sugar-beet hoeing. This was done after work to earn extra money. We took an acre each. It had to be hoed twice, once to single out the beet, to give them room to grow and a later hoeing when the weeds started to grow. For this we got £2.10s per acre.

When the sugar beet were ready to be harvested in late autumn we had to pull each beet up from the row on the point of a sharp beet hook and, holding it with one hand, cut the top off and leave the beet in neat rows, and the tops in another. The sugar beet were then taken by horse and cart to a great heap to be collected later by the lorry to take them to the sugar beet factory. When the sugar had been extracted, some of the pulp would be fed to the cows. We girls used to chew this too – it was a bit like sweet grey Allbran. The beet tops were fed to the cows too; if we fed them too many the milk would taste sweet.

Daphne Allen





Fingringhoe

Church of England (VA) Primary School



Some very exciting news at Fingringhoe this term! Our Year-6 pupils have been working hard to set up their very own business! In collaboration with Essex County Council and the Essex Year of Numbers Project, our students have learned how to start their own business. Pupils had to interview for company positions, formulate a business plan and carry out market research in relation to their products. The 'Fingringhoe Refillery' is the brainchild of our Year-6 company director, Poppy, and is an eco-refill shop for a fabulous range of natural and eco-friendly wash products, including hand soap, bath and shower gel and laundry detergent. Poppy had a vision to reduce plastic waste in our community and the Fingringhoe Refillery is doing just that by asking customers to re-use their plastic bottles and refill them with new products. The Year-6 team behind the Fingringhoe Refillery opened their shop doors to the school staff last week and it was a resounding success! Very soon, we will be extending an invitation to the residents of the local community to come and see the range of products on offer. Please look out for more information on the school and village noticeboards, as well as on our school's Facebook page: Fingringhoe Church of England VA Primary School.

Mrs H. Coyle & Ms D. Parker
Co-Headteachers

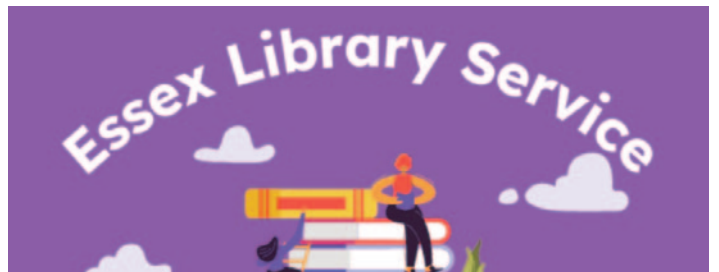
Yoga with Linds

Every Thursday night during term time:
6.30-7.30pm and 7.45-9pm
at Fingringhoe Village Hall
Breathing exercises, mobility, relaxation
in a hatha yoga style

Please do get in touch for more information:
07974005441 or lindsravenemrich@gmail.com



Maypole dancing near the great oak tree. c. 1954



Every month we recommend a book that's a particular favourite. We buy lots of electronic copies so that everyone gets a chance to listen to it on the go, or read it on your device wherever you happen to be. For June, we have two Books of the Month, both featuring in the Essex Book Festival: *The Glutton* by A. K. Blakemore, and *A Bird in Winter* by Louise Doughty.

libraries.essex.gov.uk/digital-content/book-of-the-month



A fun challenge full of activities which helps children to practice skills that they'll need to feel confident when they start school in September. They'll complete activities in seven development areas, collect stamps in their special booklet, and then receive a certificate when they finish! Come and take part in any Essex library until 7 September! Find out more about the challenge and explore Big School Meetups. <https://libraries.essex.gov.uk/news/school-readiness>

Living in the village I am sure you have heard a nightingale in your garden! You might even have seen one of our volunteers on TV talking about the Reserve. We are very proud of the population we host: these little birds arrive with us from Africa every April and are a real herald of Spring for us. At 35-40 singing males (the only real way to count them, as they are so difficult to see), we have one of the best populations in the East. This is excellent given that the British Trust for Ornithology reports that nightingale numbers have declined 53% from 1995-2008 and the general number given is a 90% decline since the 1970s. This decline also indicated a continued contraction of their range – now solely in the extreme SE of England. The decline has many reasons, as is often the case, including deteriorating conditions in their African wintering grounds, development pressures and changes in habitat and land management in the UK (fewer land owners allowing scrub on land, as things are ‘tidied up’). Another factor may be deer browsing through the scrub and eating out the bottom layer that the Nightingales prefer to be in. Historically nightingales were in great demand by the Victorians as caged song birds (even more unfortunately, since as many as 70% died within the first week of captivity). Whether our local successes are an abnormality, or an indication of an upward lift, will remain to be seen and future data will

Fingringhoe
Wick Nature
Reserve



Essex
Wildlife Trust



show. We survey our nightingales each year and this year our partnership company Essex Ecology have also surveyed some of the wider area, including Middlewick ranges – which boasted a similarly strong population that might be of influence in the ongoing planning matters.

Verity Hales, Site Manager



**VISIT YOUR AWARD-WINNING LOCAL COMMUNITY SHOP
WE STOCK ALL YOU WOULD EXPECT FROM
A CONVENIENCE STORE – AND MORE!**

**FRESH & FROZEN FOOD
BREAD AND DAIRY PRODUCTS
FRESH FRUIT & VEGETABLES
OFF LICENCE – WINES, SPIRITS, BEERS, CIDERS
SOFT DRINKS, SNACKS AND SWEETS
CLEANING MATERIALS
NEWSPAPERS (Pre-Ordered only)
DRY CLEANING
VISITING POST OFFICE**

**OPEN
8AM TO 6PM MONDAY TO FRIDAY
9AM TO 5PM SATURDAY
9AM-NOON SUNDAY**

**The Lion Corner Community Shop
1 Lion Corner, Langenhoe CO5 7LF**

Entrance off Fingringhoe Road

07708 403292

www.lioncornercommunityshop.co.uk



It's time to sign up for the Wildlife Trust's **30 days Wild**. Our annual campaign is a fun, feel-good challenge, run every June. We invite everyone in Essex to carry out Random Acts of Wildness every day during June for your health, wellbeing, for wildlife and for the planet. Go on a bug hunt, switch to green energy, make a bee hotel... whatever you do, just make sure it's wild! Sign up, get your free pack and get Wild!

To help you on your way, we have some events that might count for one of your wild activities:

Join our Ranger Ramble on 8 June

Dragonfly ID workshop on 13 June

**Midsummer Quiz on 21 June
– get your team together and get booked in!**

We are also running a series of Summer late nights from May to August – the last Friday of the month – pop along to get your nature fix after work, or stay longer and enjoy the sunshine (fingers crossed!)

www.essexwt.org.uk/getinvolved/campaigns/30-days-wild



Many of us have visited the lovely Perrywoods Garden Centre and enjoyed a coffee in their restaurant at Tiptree but did you know about their recycling facility? It's a drive-thru based in their car park and will accept all colours and types of pots as well as compost bags. All contributions are processed and recycled, mostly as new containers.

Black pots still can't be put in the kerbside plastic collections and have to go into the black bags; wouldn't it be better not to use them in the first place? Plant seedlings into compostable pots or egg boxes; try placing the latter into bread bags to replace plastic propagators. Cut large drinks bottles in half, make drainage holes in the bottom and plant with cuttings, replace the top half and water through the neck. Fruit and vegetable punnets which often come with pre-made holes could be given a new lease of life as seed trays and re-used time and time again. Save pennies and the planet at the same time!!

Jan Lelliott

The last litter pick in March was a real success and we were able to travel further towards Rowhedge, collecting a whopping 16 bags from in and around the village. Another big 'thank you' to Becky at the Social club for opening up for us for much needed refreshments. It's always great that the community comes together and anyone is welcome to join in. The next proposed litter pick is at the end of October and will be noted in the September *News & Views* and on the village notice boards.

I notice we have a few swallows that have returned to the village – sadly their numbers have dropped over the years. It would be great to get a feel for where they are nesting and if any nest sites can be made more permanent for our migratory visiting friends. If any members of the community would like to put their heads together on this then please do get in touch:

fingringhoegreengroup@gmail.com

Lindsey Raven Emrich



Fingringhoe Womens Institute

WI

In May we had our AGM and the new committee was formed, made up of some old faces and some new ones as well. Ann Chamberlain was again elected to be our president. Thank you Ann for continuing in this role.

Despite the rain our walking group has managed to get out and about most Wednesday mornings. On our walks we have visited East Mersea, including Cudmore Grove, that was a very muddy walk, but some really lovely views. We have also walked the Bourne Valley footpath, and enjoyed coffee at the Starlight Tearooms at the Crematorium. More recently we have been to Fingringhoe Wick to listen to the nightingales and Wivenhoe Woods to see the beautiful bluebells.

Although our darts team have played well this year they didn't do too well in the Essex WI Federation darts tournament – they were very unlucky and were narrowly beaten on a number of occasions. They are still practicing in the club on Monday evenings, hoping for better luck next year.

At our March meeting our speaker was Gary Egerton and he gave a very interesting talk about Bishops and Brothels, centered around the Southwark area of London. (If you cross Tower Bridge, leaving the Tower behind you and turn right, that is Southwark.) Because it was outside the city it attracted a large number of prostitutes and became the first licensed brothel district in the country, set up in the twelfth century. The brothels were controlled by the Bishop of Winchester who owned the land and a palace surrounded by parkland. The Bishop collected rents and fines from the brothel owners and prostitutes, who became known as Winchester Geese. Some of our members so enjoyed his talk they they have booked a walking tour in London that Gary Egerton is doing in October, this time telling us about Royalty to Politics, starting at Buckingham Palace and ending up in Westminster.

At the end of March eleven of our members enjoyed a day out at Olivers Plants where they toured the greenhouses and then were given a guided tour of the kitchen garden before enjoying lunch in the onsite café. They also got a lot of tips for growing their own tomatoes in pots and growbags.

In April our speakers were John and Stella Briggs who told us all about spinning and weaving from raw wool to finished garment, all by hand, using a traditional spinning wheel – a very lengthy process.

Our meetings take place on the **second Tuesday of each month in the village hall**, starting prompt at 7.30pm. As well as regular speakers we have social activities and plenty of time for chat, and tea and cakes. New members are always welcome.

Jill Bellinger

From St Andrew's Church



Having been asked recently how things were going in the church we thought we would give you a skip through the last year. Apologies for not informing you earlier that Tree of Light donations totalled an amazing £785, and £270.98 was raised at the Christingle service – thank you so much. All of this was sent the Church of England Children's Society.

We have been really blessed by the response of so many people who have stepped forward to help keep the church going. From keeping the grass cut, to our 'new maintenance man', a new team of sides-people and those who make sure we have enough milk for the refreshments. There are also our very talented flower ladies and the 'Holy Dusters' have had new people join them. We have a new secretary and treasurer and a new group recently started to sort out childrens' activities for our Family service.

Our services are now as follows:

1st Sunday at 10am

Our very relaxed lay-led Café-type service begins with refreshments and continues with the service sitting round tables. There is no sermon but we discuss the readings. Some people like to join in or others just to listen.

2nd and 3rd Sundays at 9.15am

Communion services led by Revd Terry.

4th Sunday at 10am

Our lay-lead family service begins with a short talk followed by refreshments and childrens' activities before a short service. Parents are encouraged to join in. Sometimes it's a bit hectic but they all seem to enjoy it so far!

All are welcome to these services.

We continue to go to Aveley Lodge once a month where we are always warmly welcomed. Our 'Coffee and Co' at **2-4pm on the first Tuesday of the month** has a variety of people who come and go at different times. Again all are welcome to come. We are thankful to Revd Terry for his continuing spiritual support, guidance and leadership. With thanks to all of you, we are very blessed.

Sheena Taylor, Churchwarden

Swallows and New Beginnings

I had a conversation which led me to look up the symbolism of the swallow. Cultures worldwide see swallows as significant birds representing loyalty, freedom, joy, hope, love, and loss. I'm sure most readers know already that the swallows arrive in the United Kingdom from South Africa in April and begin their journey back in October.

As the swallow arrives the season begins to change from spring to summer, there are new beginnings, we see new growth, new smells in the air, a sense of freedom for the children as mornings become lighter and the days stretch out.

The swallow's journey itself is arduous, just like our journey through life is difficult, with all its challenges. And as we meet these challenges there will be Joy, Love, Hope and Loss to overcome, all part of the trials of life's journey

here on earth. There is always help with new beginnings and life's challenges, from our

family, our friend, our neighbour,

our Lord whose birth is said to be

represented by the swallow

in art.

Have a good Summer.

Revd Terry

(always available

for a chat)



Would you consider joining the Friends of St Andrew's Church?

We are a charity, formed in 2006, on a non-religious basis, to help maintain, repair and improve the fabric of our lovely medieval church, for the benefit of the whole community and visitors.

We usually put on fundraising activities each year, such as concerts, cream teas and a popular quiz night. Our funds also grow steadily through annual members' subscriptions (£20 individual or £30 family). We would very much like to welcome newcomers to our membership.

Please contact me if you would like to join us, or need further information: Michael Parmenter (Chair)

michaelparmenter@googlemail.com





Open Day 20 July 1pm to 5pm

Fingringhoe Church Green Trust will be hosting an open day, with a free BBQ and licensed bar where you can buy a cold beer, glass of wine etc, on the afternoon of Saturday 20th July 2024, from 1pm until 5pm, with food being served from 2pm.

We would like to invite residents of Fingringhoe and the local area to come along and see what the Trust has achieved over the last few years with renovations and refurbishments to the apartments at Church Green. It will also give you the opportunity to meet some of the residents, Trustees and Friends of the Trust, whilst enjoying the tranquil surroundings of The Courtyard.

If you would like to come please email secretary.cgt@gmail.com or message the Trust secretary on 07521136653.

We look to welcoming you all and please don't hesitate to contact us if you have any questions.

Kate Allsopp, Secretary

The **visiting post office** comes three times a week to Church Green
Monday & Friday 10am – 1pm Wednesday 1– 4pm

letters & parcels: all services

home phone and broadband packages

top up mobiles



vehicle tax

travel insurance

fishing licences



order foreign currency – collect next visit



banking with all high street banks:
deposits and withdrawals



Please send contributions for the next *News & Views* to Lyn Rodley (editor) **no later than 18 August 2024**
to: lynrodley@btinternet.com or hard copy to Lord Nelson House, Ferry Road, Fingringhoe CO5 7BX